

# Birchmount Bluffs Neighbourhood Centre

## Annual Report 2017-2018





## VISION

We envision a strong and inclusive neighbourhood in which community members fully participate in opportunities that enhance well-being for all.

## MISSION

Birchmount Bluffs Neighbourhood Centre works with diverse individuals, families and communities to overcome barriers and enhance quality of life. We do this by fostering social inclusion, developing skills and abilities, and collaborating with our partners to facilitate access to a range of flexible and responsive programs and services.

## VALUES

We define these values as follows:

**Respect:** We believe that every person has the right to be met with compassion, accepted in a non-judgmental way, and treated with respect and dignity.

**Diversity:** We embrace diversity in all of its forms, in our clients, agency and community, and support non-discriminatory policies and practices.

**Inclusion:** We actively seek ways to welcome all members of our community and ensure they have the opportunity to participate in meaningful ways.

**Capacity Building:** We nurture the development of individual and community capacity by offering programs and services that enhance independence and build upon abilities.

**Equitable Access:** We commit to removing barriers that restrict individuals and groups from accessing services and participating in our programs.

**Collaboration:** We believe that each of us is enriched when we are able to work collaboratively with one another to share experiences, perspectives, information, knowledge and supports.

**Integrity:** We employ honesty and ethical decision-making practices in all that we do.

**Accountability:** We recognize that our community has entrusted us with an important responsibility, so we take care to be responsible and accountable for the management of our agency within available resources.

# Table of Contents

2. Vision, Mission, Values	10. Inclusion & Capacity Building
3. Message from the Chairperson of the Board of Directors	11. Equitable Access & Collaboration
4. Message from the Executive Director	12. Integrity & Accountability
5. Governance	13. Financials
6. Organizational Chart	16. Community Partners
7. BBNC Programs and Services	17. Funding Sources
8. BBNC Programs and Services continued	18. Donors
9. BBNC's Story of Values - Respect & Diversity	21. Photo Gallery
	22. Volunteers

## Message from the Chairperson of the Board of Directors & Executive Director

Welcome to the 2018 edition of the BBNC Annual Report. This is a time to celebrate our accomplishments and share our struggles. As a membership organization, BBNC is accountable to you, the members.

The year for which we are reporting is April 1/2017 -March 31/2018. It has been a very challenging year with many changes. The ongoing construction has affected us physically and financially with closures, noise, etc. but now the construction is almost complete and we can enjoy the benefits.

Despite our best efforts, we ended the year with a large financial deficit. This motivated BBNC to evaluate the organization and determine new organizational structures, which should help us to be in a positive financial position next year.

A lot has happened, BBNC began a strategic planning process in the fall, then has gone through a restructuring process with the help of a consultant provided by funds from Social Development and Administration of the City of Toronto.

We need your support to help out as board and committee Members, and organizational volunteers. We especially need help from members with expertise in Financial, Legal, Human Resources, Board governance, marketing, fundraising and computer skills.

An update on our programs-

Our fitness, wellness and aquatics programs performed better this year than last year. Thanks to our hardworking instructors and loyal community members. We are planning to expand them even more! More classes have been added, new equipment has been purchased, and hopefully new space will be available.



Fitness and Wellness is the key to maintaining healthy, involved communities. BBNC wants to be the Center of our community.

Our EarlyON Child and Family Centre's programs are now completely free of charge. BBNC - EarlyON, with the support of Toronto Children Services and United Way of Greater Toronto, delivers programs for children and caregivers. This fall we have three times the number of families and children enrolled in our EarlyON Child and Family Centre's programs. It is operating at full capacity. We received a grant from Toronto Children's Services to purchase new equipment. We have nice new mats, chairs, toys etc.

Our Nursery School program helps prepare children for kindergarten. It operated at full capacity with 16 children in each class. Classes operate 4 Mornings and 2 afternoons, per week. We have been able to accommodate everyone who applied.

**Continued on Page 4**

## Message from the Chairperson of the Board of Directors & Executive Director con't

BBNC Youth programming has supported youth in the Birchmount East Eglinton Kennedy Park Youth Network (BEEKYN) with BBNC staff leading a wide coalition of youth and service providers delivering programs in one of the most needed areas of Scarborough. We are proud to report that this youth program model is being replicated in Calgary and Vancouver.

BBNC is continuing to implement our poverty reduction strategy through the SHARE365 Program supporting 250 families struggling with poverty in South West Scarborough. It is thanks to our hardworking volunteers who work tirelessly supporting the SHARE365 Program. To them thank you. We could not offer this program without the volunteers!

The Seniors Poverty Animators Network is another program that addresses poverty through civic engagement and democratic education on rights and responsibilities of all citizens.

We are very excited about the changes coming up. We are working closely with Parks and Recreation, Community Services and Children's Services to offer programming that will meet the needs of the community.

For all our programs, there are subsidies available for anyone requiring assistance. BBNC is once again confirming its commitment to social inclusion. We have a suggestion box next to the reception desk and encourage you to give us your ideas.

Yours Sincerely

Mamta Deshwar  
Chairperson

Enrique Robert  
Executive Director

GET  
ON  
BOARD



### AGM Keynote Speaker

#### **Pedro Barata**

Senior Vice President,  
Community Impact & Strategy, United Way Greater Toronto

**Pedro Barata** is United Way Greater Toronto's Senior Vice President, Community Impact & Strategy. He works with United Way teams and community partners to develop and implement strategies that can drive impact and change. Pedro provides strategic leadership at United Way in the areas of community investment and partnerships, communications, policy and public affairs, research and evaluation, as well as cross-organizational strategy. His work and extensive volunteer activities in the non-profit sector span two decades, focused on public policy, community organizing and communications.

## Governance

Birchmount Bluffs Neighbourhood Centre is governed by a volunteer board of directors, a diverse group of community leaders and key decision makers who provide vision, strategic leadership, advocacy, accountability and stewardship. The board members are elected at the Annual General Meeting.

These volunteers are passionate about BBNC and dedicated to its mission to provide programs and supports and foster social inclusion within the community, with a focus on individuals who face barriers to service.

### 2017 - 2018 Board of Directors

Wendy Fulton*	Treasurer
Alice Schuda*	Corporate Secretary
Mamta Deshwar	Chairperson
Tim Reilly*	
Angie Joyce	Corporate Secretary
Kathryn Mannion*	Chair Person
Sandra Daga*	
Samantha Ambrozy*	
Jennifer Marinos*	Vice Chair
Nancy LaPlante	Vice Chair/Treasurer
Martha Shepard	
Agnes Thomas	
Sarah Beale	
Joanne Davidson	

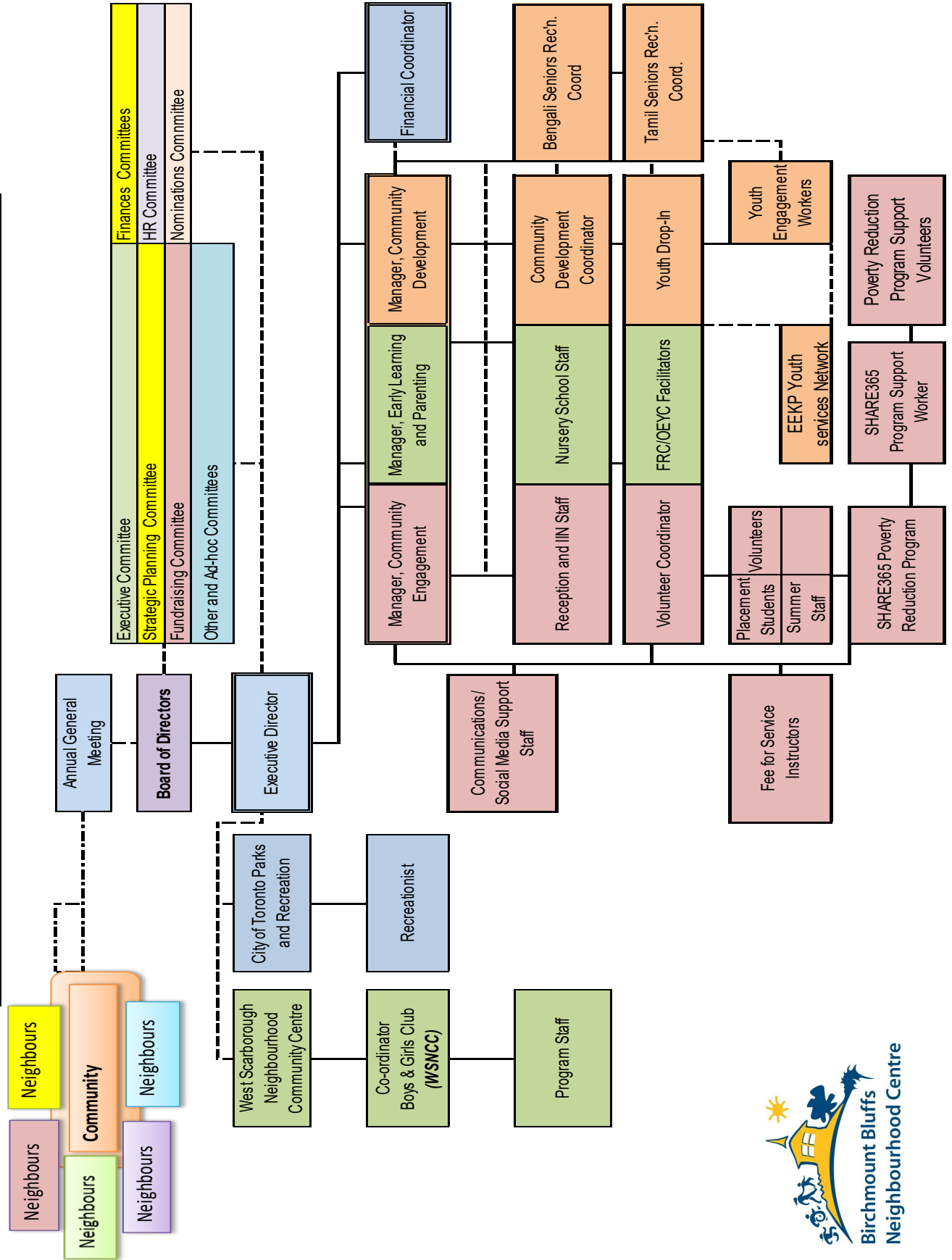
\* Completed term or left during the year

### 2017 - 2018 Staff

Afsana Chowdury	Bengali Seniors Recreation Coordinator
Asiya Motala	Registered Early Childhood Educator
Claire Johnson*	Registered Early Childhood Educator
David Meyers	Manager, Community Development
Deborah Nurse	Financial Coordinator
Enrique Robert	Executive Director
Kevin Jagmohan	Youth Development Initiatives Coordinator
Linda Curley	Manager, Community Engagement
Linda Driscoll	Manager, Early Learning and Parenting
Lisa Jardine	Volunteer Coordinator
Maithily Uthayasangar	Tamil Seniors Recreation Coordinator
Naheed Fatima	Registered Early Childhood Educator
Nisha Pragg-Singh	FRC Facilitator
Omar McIntosh*	Reception/Administrative Assistant
Sadia Freeman	FRC/OEYC Facilitator
Shaunette Tomlinson	Administrative/ Financial Assistant
Toni Blay*	Volunteer Coordinator
Toni Morra	SHARE365 Support Worker

\* Completed contract or left during the year

# Birchmount Bluffs Neighbourhood Centre Organizational Structure



# BBNC Programs and Services

BBNC offers a variety of programs that cater to children 0-6 years of age, their families and child care providers. Our EarlyON and Nursery School staff are warm and friendly instructors who are certified in CPR/First Aid training. Nursery School staff are licenced Early Childhood Educators (RECE's) through the College of Early Childhood Education (CECE). Please see below for our programs descriptions.

## EarlyON Child and Family Centre

As of January 2018, the Ontario Early Years Centres (OEYC), Parenting and Family Literacy Centres, Child Care Resource Centres and Better Beginnings, Better Future became one big family: EarlyON Child and Family Centre. EarlyON centre provides programming for children 0-6 years of age, parents/guardians and child care providers free of charge. Our EarlyON centre is a warm and welcoming environment that offers a variety of services which include, but not limited to: Fun activities (reading, sing-alongs, games and more); get advice from trained Registered Early Childhood Educators on early development; find information regarding other services in the community and connect with other families with young children.

## Preschool Programs

BBNC offers a variety of programs for children 2.5-5 years of age to attend with a parent/guardian, led by trained instructors.

## Community Nursery School

BBNC operates a Nursery School licenced by the Ministry of Education, which functions 37 weeks each year from September through June. Morning classes operate from Mondays-Thursdays from 9-11:30am. Afternoon classes operate on Monday's and Wednesday's from 1-3pm. Staff are qualified Registered Early Childhood Educators who devote their time, patience, and knowledge of child development.

## Children's Programs

In partnership with West Scarborough Neighbourhood Centre, we offer a Boys and Girls Club. Its social, recreational and educational activities emphasize fair play and leadership. In addition, BBNC also offers Karate.

## Youth Development Initiative

Youth ages 14-24 take part in a variation of engaging activities, workshops and programs encouraging social awareness, community engagement, health through education and physical activities, growth in leadership and social inclusion.

**BEEKYN (Birchmount Eglinton East Kennedy Park Youth Service Providers Network)** is comprised of youth and youth serving agencies assisting the Birchmount Eglinton East-Kennedy Park area. Funded by the City of Toronto's Social Development and Investment Program. The project supports engagement, access and skill building for area youth and residents.

## Fitness & Wellness Programs

For those interested in fitness and wellness programs, a wide array of classes taught by CanFit Pro certified instructors are available. To facilitate choice, classes are offered in both the daytime and evening, and many are designed to accommodate persons of different physical ability levels.



**Linda Driscoll,**  
Manager Child and  
Family Programs  
receiving a  
**Canada 150**  
**Outstanding Leaders**  
Award from  
MPP Bill Blair



# BBNC Programs and Services

## Older Adult Programs

Older Adult Programs at BBNC welcome the participation of community members from all backgrounds and with diverse abilities. The programming strives to meet the physical, social, and recreational needs of adults aged 60+, and works to develop a strong sense of community among its members.

**S.A.S.S.I. - (Seniors Assisting Seniors Social Inclusion)** is a peer led seniors active living project that offers a variety of programming and trainings which address and identify the needs of our community seniors coming from all backgrounds, with diverse abilities.

## SPAN (Senior Poverty Animators Network)

In SPAN, seniors and adults support area residents to share their civic voice on poverty in Scarborough and Toronto. Members access ongoing civic education, run anti-poverty campaigns, working hand in hand with community groups, non-profit and government partners, to advance poverty reduction and democracy.

## Bengali Seniors Recreation Program

Bengali seniors in Scarborough are invited to come together every Tuesday at BBNC to enjoy an afternoon of fun physical activities and social connections. Activities will include gentle exercises like yoga, gentle fitness, and walking, table games, arts activities including Bengali singing and dancing and cultural celebrations. Enjoy Health Education workshops and community trips. We celebrate our cultural and religious festival like Eid, Puja, Bengali New Year, Mother Language day, Victory Day and more. Program will be led in Bengali and English. Healthy refreshments enjoyed at each visit.

## Active & Able Programs

Active and Able Programs provide inclusive services and programs that advance active living, independence and full inclusion for persons with disabilities and health barriers. The program offers access to several integrated and adapted wellness, recreational, capacity building and social programs.

## Community Development Program

The Community Development Program works with residents, community groups and partner agencies to improve progressive social policy and action on key issues such as poverty, unaffordable housing, food insecurity and barriers to accessing community services.

At the organizational and program levels, we partner to offer residents facing barriers with skills training, inclusive health programming, leadership and civic engagement opportunities that enhance community engagement, inclusion and social change.

BBNC's partners in this work include Commitment To Community, Social Planning Toronto and the Toronto Neighbourhood Centre Network.

## SHARE365

SHARE365 is BBNC's poverty reduction strategy focusing on individuals and families in Southwest Scarborough living in poverty. Supports are provided in terms of access to healthy foods; opportunities for improved wellness for all ages; Educational/ Employability skill building opportunities for all (Nursery School, trainings and certifications, skill building, etc.); and civic engagement

## Volunteer Program

BBNC's Volunteer Program offers all ages opportunities to connect and strengthen this community. BBNC has adopted the Canadian Code for Volunteer Involvement (CCVI) and believes in meaningful and inclusive engagement of volunteers in the daily programs and services offered through BBNC. Volunteerism is an organizational responsibility and the CCVI provides the path to follow. BBNC commits to value and support the contribution of Volunteers.





# —INCLUSION—



"My life was totally changed by this program. I thoroughly enjoyed the cultural festival and physical activities"

**3597**  
**Community resident participants**

# —DIVERSITY—



"More sociable now: no longer afraid to speak with others, to open up. Was to myself in the past but since coming here, I chat with other people. I've really opened up."

**418**  
**Individuals involved in the Active & Able Program**

# —NOISY—



Volunteering has given me the opportunity to use my skills while connecting and contributing to my community

**498**  
**Community members contributed 37,350 Volunteer hours**

# —CAPACITY BUILDING—



**520**  
**Youth engaged in 42 skills development workshops.**

# COMMUNITABLE ACCESS

# COLLABORATION

# ENERGY

# ACCOUNTABILITY

"Fruits and vegetable is good but social interaction is better. Good Food Box is nutritious but social interaction sustains me."

I would not have recovered from my knee surgery so quickly if it had not been for attending fitness classes and the amazing instructors!

My son was very shy and cried a lot when he started, but now he is excited to go to school!



**93% of**  
**SHARE365**  
**Participants**  
report improved  
social connections

**47**  
**Workshops with**  
**Community**  
**Partners for**  
**residents**

**1835**  
**weekly**  
**visits in**  
**222 Fitness**  
**& Wellness**  
**Classes annually**

**499**  
**Preschool**  
**aged children**  
**accessed**  
**programs**

# Financials

March 31, 2018

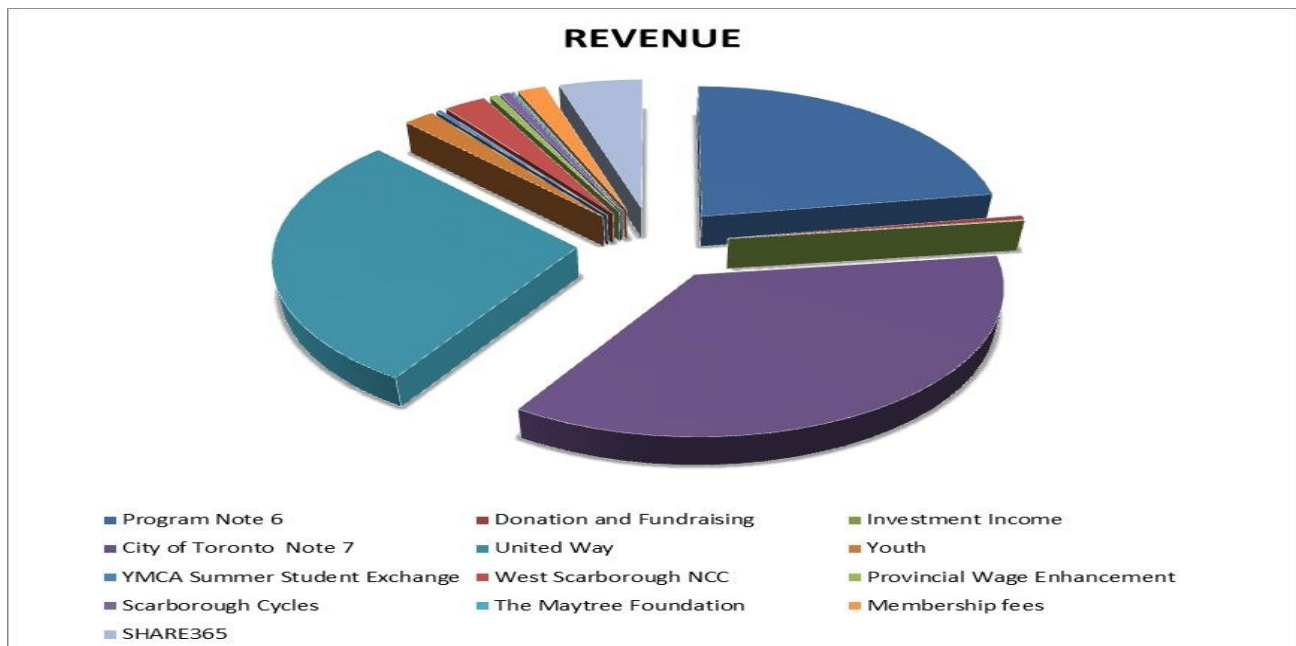
## Statement of Financial Position

	<b>2018</b>	<b>2017</b>
<b>Current Assets</b>		
Cash and temporary, Note 3	\$121,281.00	\$15,680.00
Temporary Investment Note 3	\$35,623.00	\$0.00
Account receivable		
HST	\$7,322.00	\$11,735.00
Grants	\$8,487.00	\$17,530.00
Misellaneous	\$500.00	\$1,119.00
Prepaid Expences	\$6,086.00	\$7,268.00
<b>Total Current</b>	<b>\$179,299.00</b>	<b>\$53,332.00</b>
<b>Capital Assets</b> Note 4	<b>\$1.00</b>	<b>\$1.00</b>
<b>Reserve Funds</b> Note 3	<b>\$14,727.00</b>	<b>\$80,952.00</b>
	<b>\$194,027.00</b>	<b>\$134,285.00</b>
<b>Current Liabilities</b>		
Accounting payable and accrued liabilities	\$55,696.00	\$48,428.00
Deferred revenue	\$128,891.00	\$44,804.00
<b>Total Liabilities</b>	<b>\$184,587.00</b>	<b>\$93,232.00</b>
<b>Net Assets</b>		
<b>Internally restricted</b>		
Equipment reserve per statement Note5	\$14,727.00	\$14,727.00
Share Christmas reserve per statement Note5	\$0.00	\$66,225.00
<b>Unrestricted</b>		
Accumulated (Deficit) per statement	-\$5,287.00	-\$39,899.00
	<b>\$9,440.00</b>	<b>\$41,053.00</b>
	<b>\$194,027.00</b>	<b>\$134,285.00</b>

Birchmount Bluffs Neighbourhood Centre's financial statements are audited by **Prentice Yates & Clark** annually. Complete audited financial statements are available upon request.

# Financials

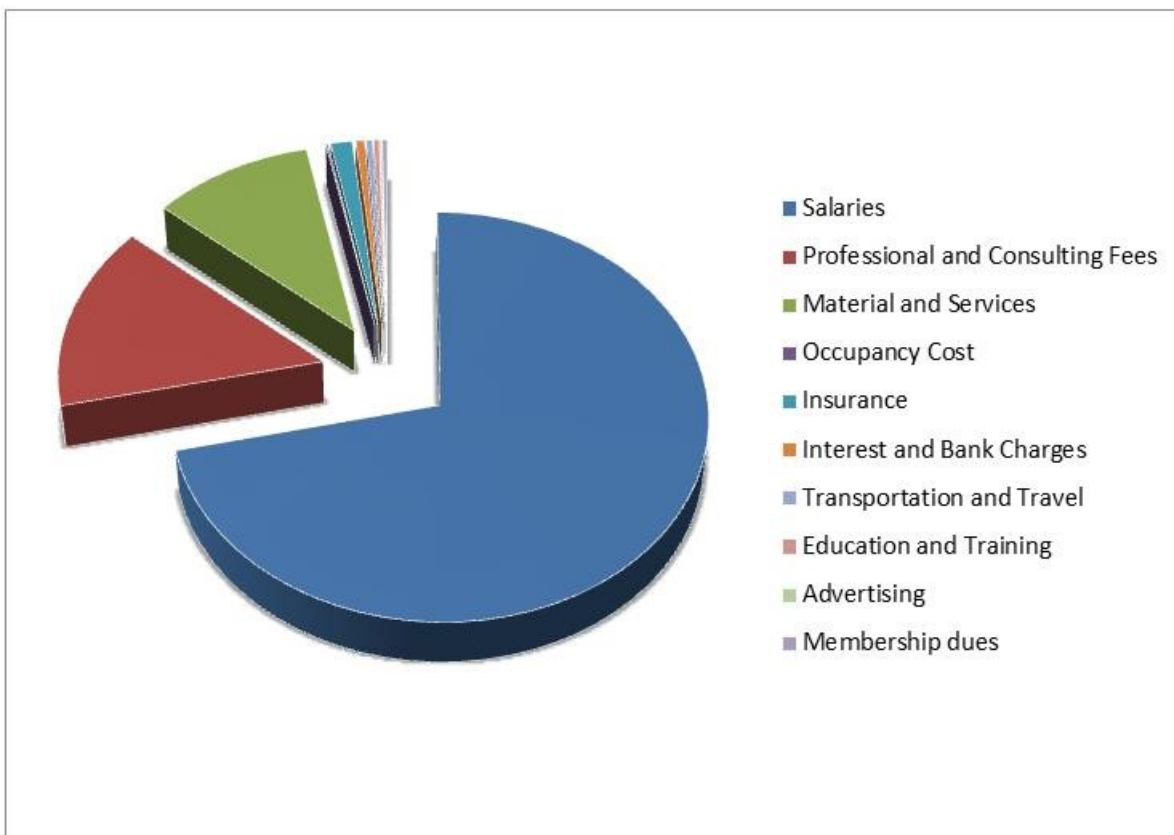
Statement of Operations	2018	2017
<b>Revenue</b>		
Program Note 6	\$165,742.00	\$165,150.00
Donation and Fundraising	\$3,323.00	\$12,330.00
Investment Income	\$625.00	\$312.00
<b>Grants</b>		
City of Toronto Note 7	\$267,148.00	\$246,941.00
United Way	\$210,180.00	\$210,180.00
Service Canada Youth	\$13,668.00	\$9,574.00
YMCA Summer Student Exchange	\$2,314.00	\$2,363.00
West Scarborough NCC	\$18,519.00	\$24,040.00
Ontario Trillium Fnd.		
Bengali - Tamil Seniors Recreation Prm	\$0.00	\$42,605.00
Seniors Community Grant - Provincial Grant	\$0.00	\$7,996.00
Provincial Wage Enhancement	\$3,616.00	\$3,240.00
Scarborough Cycles	\$4,500.00	\$7,000.00
Toronto Foundation	\$0.00	\$14,107.00
Tippet Foundation	\$0.00	\$10,000.00
The Maytree Foundation	\$1,300.00	\$0.00
Membership fees	\$12,116.00	\$15,002.00
SHARE365	\$35,939.00	\$73,075.00
<b>Total Revenues</b>	<b>\$738,990.00</b>	<b>\$843,915.00</b>



# Financials

	2018	2017
<b>Expenses</b>		
Salaries	\$550,770.00	\$576,579.00
Professional and Consulting Fees	\$114,301.00	\$124,099.00
Material and Services	\$80,793.00	\$129,283.00
Occupancy Cost	\$999.00	\$17,248.00
Insurance	\$10,715.00	\$11,048.00
Interest and Bank Charges	\$4,282.00	\$6,345.00
Transportation and Travel	\$2,985.00	\$10,042.00
Education and Training	\$2,620.00	\$2,486.00
Advertising	\$883.00	\$513.00
Membership dues	\$2,255.00	\$2,866.00
<b>Total Expenses</b>	<b>\$770,603.00</b>	<b>\$880,509.00</b>

<b>Surplus</b>	<b>Deficit</b>	<b>-\$31,613.00</b>	<b>-\$36,594.00</b>
----------------	----------------	---------------------	---------------------





# Community Partners

## A

Access Alliance Multicultural Health  
and Community Services  
Aisling Discoveries Child and Family Centre  
Alliance for South Asian AIDS Prevention  
ANC Scarborough Village  
ANC Eglinton-East Kennedy Park-Ionview  
Agincourt Community Services Association  
Anne Johnston Health Station

## B

Bellwoods Centres for Community Living  
Birchmount Eglinton East Kennedy Park Youth  
Network  
Birchmount Park Collegiate Institute  
Black Coalition for AIDS Prevention  
Breaking The Cycle

## C

Cardinal Newman Catholic Secondary School  
Catholic Cross-Cultural Services  
Centre for Independent Living, Toronto  
Churches by the Bluffs Food Bank  
City of Toronto Divisions:

- ◆ Adapted & Integrated Services
- ◆ Children's Services
- ◆ Community Housing Corporation
- ◆ Employment and Social Services
- ◆ Parks, Forestry & Recreation
- ◆ Public Health
- ◆ Public Library
- ◆ Social Development Finance and Administration

Cliffside Employment Centre  
Commitment To Community Network  
Community Living Toronto, Scarborough Region  
Credit Canada

## E - F

East Scarborough Storefront  
Eglinton-East Kennedy Park Neighbourhood Action  
Partnership  
Ethno-racial People with Disabilities Coalition of  
Ontario  
FoodShare Toronto

## L

Local Immigrant Partnership: Toronto East Quadrant

## M - N

Macaulay Child Development Centre  
Malvern Child and Family Centre  
Ministry of Education  
Neighbourhood Link

## O - R

Ontario March of Dimes  
Ontario Non-Profit Network (ONN)  
Polycultural Immigrant and Community Services  
R.H. King Academy

## S

Scarborough Arts  
Scarborough Centre for Healthy Communities  
Scarborough Civic Action Network  
Scarborough Cycles  
Scarborough Resident Action Committee Project, City of  
Toronto  
Scarborough Transit Action  
Scarborough Village Neighbourhood Action Partnership  
Scarborough Women's Centre  
Social Planning Toronto  
South Scarborough Integrated Local Labour Market  
Planning Group

## T

Tobias House Attendant Care Services  
Toronto Neighbourhood Centres Network (TNC)  
Toronto Police Services  
Toronto Works Health and Safety Legal Clinic  
Tropicana Community Services

## U - V

United Way of Greater Toronto  
Vocational Pathways Inc.

## W - Y

Warden Woods Community Centre  
West Scarborough Neighbourhood Community Centre  
Working Women's Centre - Victoria Park Hub  
YMCA Scarborough and Newcomer Services  
YouthLink  
YWCA

# Funding Sources

## United Way Toronto & York Region

### Federal

Human Resources and Skills Development Canada  
Employment and Social Development Canada  
New Horizons for Seniors

### Provincial

Ontario Early Years Centres  
Ontario Seniors Secretariat

### Municipal

#### City of Toronto Divisions:

Children's Services  
Community Recreation and Investment  
Community Partnership & Investment Program  
Friends of Oakridge Park  
Identity and Impact  
Investing In Neighbourhoods  
Community Festivals and Special Events  
Parks, Forestry and Recreation  
Social Development Finance and Administration  
Toronto Public Health

### Foundations

Maytree Foundation  
The Tippet Foundation  
Toronto Foundation

# Donors—Businesses/Schools

## A

Agincourt Civitan Club  
Avalon Montessori School

## B

Families of BBNC Family Resource Centre  
BBNC Line Dancers  
BBNC Youth Advisory  
Bell CANADA Employee Giving Program  
Birchcliff Heights Public School  
Birchmount Park Collegiate Institute  
MPP William Blair's Constituent Office  
BMO Training Centre  
Boardwalk Montessori School  
Bond Academy  
Brookfield Global Integrated Solutions

## C-D

CIBC Mellon Global Securities Services  
Company  
Cliffcrest Book Ladies  
Collins Barrow Toronto LLP  
Courcelette Community Council  
Courcelette Public School  
Data Insight Group  
Deloitte Canada

## E

East Beach Community Assoc Lions Club  
Eli Lilly Canada Inc  
Enbridge Gas Distribution Inc.

## F-G-H-I

Harlequin Enterprises Ltd  
Healthtech Consultants

## J-K-L-M

John A. Leslie Public School  
John McCrae Public School  
Mondelez  
Kew Park Montessori Day School  
Kiwanis Club of Riverdale  
Loblaw Inc

## P

Pricewaterhouse Coopers

## R

RBC  
Reinhart Foods  
R.H. King Collegiate  
Robin's Book Club  
Rose Volunteers

## S

Scarborough Arts  
Scarborough Central Lions Club  
Scarborough City Cabs  
Scarborough Village Public School  
Scotia Wealth Management -  
D.H. Gordon Foundation  
Scotiabank  
Scotiabank IT&S Finance

## T

The Social Club  
Toronto General Hospital -  
University Health Network

## U - Z

Employees of United Way Toronto & York Region  
University Health Network - SIMS  
Walmart Canada - Scarborough  
J.A. Workman Public School





# Donors—Individuals

## A

Sharon Acorn  
Sandra Ambos  
Adele Armin  
Lisa Ashbourne  
Claire Aucoin

## B

Karen Barlow  
Corinne Barr  
Vivian Bessel  
Rob Blakely  
Eleanor Boyle  
Margaret Burns

## C

Donna Canniff  
Dianne Chafe  
Kay Charizanis  
Tammy Civciani  
Karlene Clustie  
Glenda Cox  
Randy Cooper  
Kelly Croft  
Judi Cummings  
Ellen Cunningham

## D

Chris Dassios  
Gianna Dassios  
Joanne Davidson  
Mamta Deshwar  
Karen Direkze  
Joyce Dolmer

## E

Susan Easton

## F

Jennifer Fiddian-Green  
Jacqueline Fleming  
Byron Frick

## G

Pat Gappmayr  
Patty Garn-Moore  
Eric Geddis  
Sue Geddis

Deborah Gilchrist  
Terry Girardin  
Jan Goddard  
Elizabeth Gray  
Nicholas Groden  
David Gumbs

## H

Jeff Harbin  
Penny Harbin  
Jackie Hardwick  
Katharine Harvey  
Tishanna Heerasingh  
Diana Howarth

## J

Joan Jamieson  
Andrea Jessett  
Angie Joyce-McKinnon

## K

Carolyn Kennedy  
Lou Kotsopoulos  
Renata Kraszewski

## L

Stephanie Labbe  
Allan Lacosse  
Barb Lacosse  
Valerie Lawson  
Mae Lee

## M-N

Heather MacLachlan  
Kristin Madsen  
Charlotte Matheson  
Peggy McLuckie  
Danielle Milley  
Andrea Minaken  
Micheline Mistruzzi  
Antonella Morra  
Janice Motherwell  
Mary Nickel  
Lois Lorimer Nunn

## O - P

Kristina Paul  
Donna Pegg

Linda Pelley  
Dorothy Perkins  
John Pirie  
Patrice Poppleton  
Penny Prebble  
Steve Priemer  
The Sauce Shack

## Q-R

Sharon Rahamut  
Johanna Raisanen  
Barb Rodwell  
Paul Rodwell  
Shane Ruttan-Morillo

## S

Rudolph Scheunert  
Scott Singer  
Lauren Singleton  
Sharon Slattery  
Barbara Smell  
Lucas Smith Family  
Susan Sparkes  
State Farm Insurance Companies  
Lillian Stermac  
Avinash Sudama

## T

Doris Tai  
Shaunette Tomlinson  
Janet Tseng

## V

Claire Vowles

## W

Eveline Wallace  
Emma Warrillow  
Paula Wemp  
Paul White  
Judy Wilkins  
Zara Wilmott

## X-Z

Gloria Zamin

# Volunteers

## A

Zarin Abbas  
Beraki Abraha  
Atia Ahmed  
Khurshida Ahmed  
Imteaz Ahmed  
Amal Akash  
Khaleda Akter  
Rehana Akter  
Tahmina Akter  
Michelle Alphonso  
Samantha Ambrozy  
Eric Anastacio  
Pamela Anestacio  
Julia Arbutina  
Diana Arbutina

## B

Josephine Babatunde  
Scott Baker  
Isha Ballgobin  
Shaun Bannister  
Denzil Barker  
Peter Bartosit  
Farida Begum  
Shahanaj Begum  
Shilpi Bhattacharjee  
Mufrath Bhuiyan  
Dr. Shafi Bhuiyan  
**Birch Cliff Heights**  
**Public School Teams**  
Toni Blay  
**BMO Teams**  
Jasmine Boisvert  
Nadine Bouchard  
Darlene Boucher  
Symone Boucher  
Klarissa Bourne  
Carren Bowen-Baker

## C

Manuele (Manny) Calderari  
Stanley Caravaggio  
Robert Catsaris  
Elaine Chang-Soong  
Joel Chandrakumaran  
Nishat Chowdhury  
Fabiha Chowdhury  
Munha Chowdhury

Ramisa Chowdhury

Rifah Chowdhury

Kathy Christie

**CIBC Teams**

**Collins Barrow Teams**

Pat Conway

Oliva Csida

Rachel Coyle

James Creighton

Linda Curley

## D

Rivers D'Amore  
Sandra Daga  
Sandra Davis  
Gavin Davis  
Matthew Defreitas  
**Deloitte Canada**  
Mamta Deshwar  
Linda Driscoll  
Pritom Dutta

## E

Ashley Eeg  
**Eli Lilly Teams**  
**Enbridge Teams**  
Emily Everest

## F

Asma Ferdousy  
Mike Ferguson  
Tanya Ferguson  
Dede Fitzpatrick  
Nicole Flynn  
Sadie Freeman  
Valerie French  
Byron Frick  
Wendy Fulton  
Ryan A. Furlong

## G

Sean Gallagher  
Beverly Gardiner  
Frank Gaultieri  
Julian Gedde  
Sue Geddis  
Alandra Gomez  
Max Grasseman

## H

Rafika Hakim  
Priya Hawkins  
Rani Haq  
Lenard Hardwick  
**Harlequin Teams**  
Gwen Harrison  
Elysia Harrison  
Natasha Haseeb  
Kelly Hatch  
Kelly Hayes  
Sean Henry  
Ashraf Hossain  
Nashita Hossain  
Nabiha Hossain  
Diane Howarth

## I

**IBM Teams**  
Izabella Isakovich  
Jahanara Islam  
Mohsana Islam  
Md.Rabiul Islam  
Tamrin Islam  
Aisha Ismail

## J

Kevin Jagmohan  
Thaksha Jeyakularaja  
Petrina Johnston  
Sakib Junaed  
Tennessee Johnson  
Rushil Joshi  
Angie Joyce

## K

Frank Kapiniaris  
Rafi Kazi  
Allister Keene  
Jackie Kelly  
Nazma A Khanam  
Malini Khotsiphom



**Birchmount Bluffs  
Neighbourhood Centre**

**L**

Barb Lacosse  
Syeda Farhat Lamisa  
Vivian Lau  
Valerie Lawson  
Brian Lee  
Selene Lee  
Alexander Lewis  
Twanna Lewis  
Raekwon Lewis-Gibbs  
Adenieke Lewis-Gibbs  
Denva Lilly  
Cathy Line  
Wilma (Willie) Little  
Vivian Lockton  
Ryan Low

**M**

Jessie MacRae  
Samin Mahdi  
Chris Mahoney  
Kathryn Mannion  
Jennifer Marinos  
Jennifer Marriott  
Bernadine Martin  
Charlotte Matheson  
Kostantinos Mavromatis  
Dulce Mayora  
Kiara McArth  
Tamara Matheson  
Ian McCombe  
Pat McCormick  
Diana McLaren  
Shawna McNeil  
Corrina Melles-Orrego  
David Meyers  
Bob Mitchell  
Fariya Mohammed  
Ghalia Mohammed  
Janice Motherwell  
John Motherwell  
Daniel Mullally  
Karen Murphy  
Noor Banu Mursi

**N**

Abraham Nazir  
Kazi Nazneen nabi  
Luthfun Nesa

**O**

Nieala O'Beirne  
Joan O'Halloran

**P**

Naeen Patel  
Damiana Pavone  
Elizabeth Penny  
Sean Pereira  
Shelley Perisio  
Anita Persaud  
Loreen Peters  
Cheryl Pirie  
Louis-Philippe Pouliot  
Helen Porter  
Nisha Pragg-Singh  
Chris Preeble  
Nicholas Preeble

**Pricewaterhouse Cooper Teams**

**R**

Kazi Rafi  
Asif Rahman  
Fardin Rahman  
Khalilur Rahman  
Mehnaaz Rahman  
Rufaida Rahman  
Melissa Rajaram  
Kishan Raju

**RBC Teams**

Elizabeth Reid  
Penny Reid  
Tim Reilly  
David Remedios  
**RH King Academy Teams**  
Lansa Ricoud  
Elizabeth Ritchie  
Barb Rodwell  
Ethan Roper  
Michelle Rupnarain

**S**

Namrata Saha  
Tasfar Saif  
Lauren Salmon  
Satchin Sapkota  
Bidyut Sarker  
Brian Schirley

**Scotiabank Teams**

Alice Schuda  
Shirin Seema  
Sohan Shahab  
Nischal Sharma  
Tanya Sheppard  
Ayesha Sherien  
Dumadean Simpson  
Kirishan Sivasubramaniam  
Kibishan Sivasubramaniam  
Ratheka Sivasubramaniam  
Sharon Slattery  
Valerie Smith  
Doreen Smith  
Kim Smither  
EveAnna Spehar  
Jeeyan Syed

**T**

Tasfia Tabassum  
Yvonne Tait  
Austin Tan  
Nadira Dolly Tarassum

**TD Teams**

**TD Insurance Teams**

John Telford  
**Telus Teams**  
Veena Thayanithy  
Jessica Thom  
Diana Thomson

**U - V**

Beverly Vanderlinde  
Robert Vassileff  
Najma Velshi  
Alyssa Vidal

**W - Z**

David Walters  
Christine Weeks  
Morgan White  
Cathy Wong  
Kathryn Wood  
Mathew Wright  
Connie Zhang



Come tell us your story and help us make new ones

93 Birchmount Road  
Scarborough, Ontario  
M1N 3J7

Tel: 416-396-4310  
Fax: 416-396-4314  
[www.bbnc.ca](http://www.bbnc.ca)  
E-mail: [contact@bbnc.ca](mailto:contact@bbnc.ca)

Birchmount Bluffs Neighbourhood Centre is a registered, non-profit charitable organization.  
The operation of these programs is funded by charitable donations from businesses,  
organizations and individuals.

Charitable Registration Number:  
107842452RR0001

